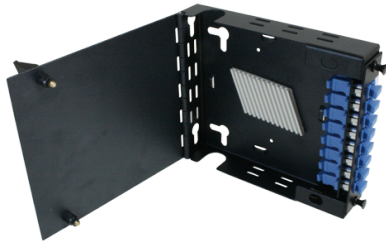


# AMW1 Wall Box - 1 LGX Assembly



The AMW range of indoor wall mounted splice enclosures offers a compact solution to the end user. This enclosure has been designed to accept up to 1 LGX style assemblies.

With the ability to use a full array of adapter types this enclosure offers a flexible solution to the end user, enabling them to incorporate a multi functional enclosure that allows easy access during installation or rework with no disturbance of the existing cable or fibers.

In the addition to the array of adapters the enclosure also offers multiple cable entry solutions, fiber cable can be spliced or pre terminated solutions, making this enclosure one of the most flexible on the market.

## FEATURES/BENEFITS

- Up to 1 LGX components
- Wall mountable
- Multiple adapter options available
- Splicing option available
- Multiple fixing points
- Hinged door
- Accepts loose tube and distribution cable
- RoHS, REACH SvHC

## APPLICATIONS

- Data centers, premise installations, telecommunication networks
- Ethernet, Fiber Channel, ATM, LAN, MAN and WAN
- Data communication and telecommunication networks
- Indoor applications

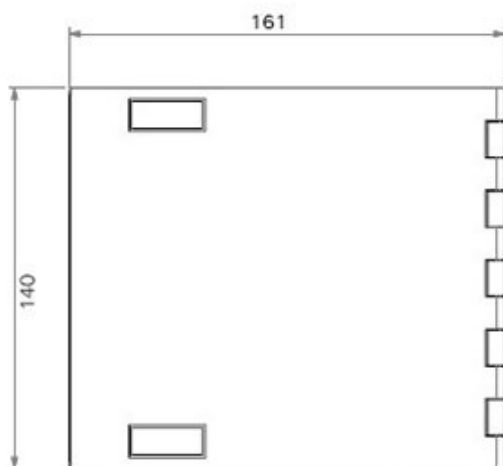
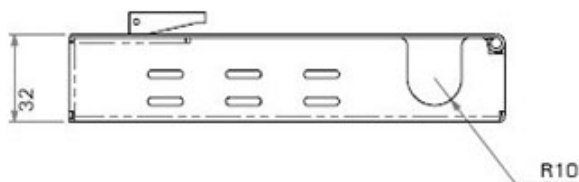
## SPECIFICATIONS

## 1 SLOT WALL BOX

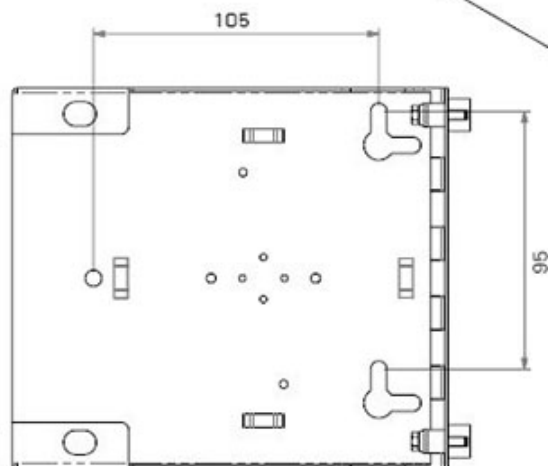
Height	140mm
Width	161mm
Depth	32mm
Net weight	0.6kg
Packaged weight	0.7kg
Packaged dimensions	180mm (W) x 180mm (L) x 55mm (H)
Suitable for Adaptor type	LGX / MTP Cassettes
Number of module positions	1
Material	Cold- rolled steel
Material thickness	1.2mm
Material finish	Powder coating
Colour	RAL 9004
Operating temperature	-40°C to +60°C
Designed in accordance with	TIA/EIA 568.C, ISO/IEC 11801, EN50173, IEC60304, IEC61754,
Compliant to	RoHS, Reach/SVHC

## TECHNICAL DRAWING

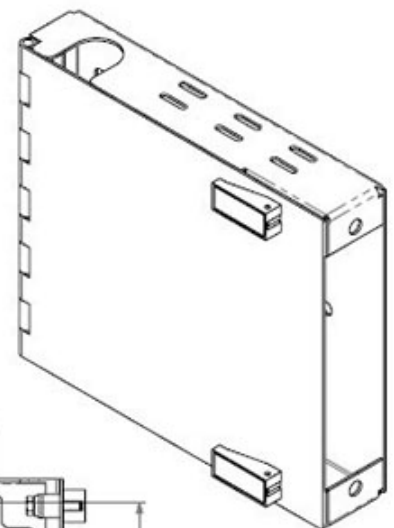
Bottom View



Closed Front View



Opened Front View



All dimensions in mm

## ORDERING INFORMATION

PART NUMBER	DESCRIPTION	LEGACY PART NUMBER
FXLFXXBXXX-01XX	LGX Wall Box Black for 1 LGX Module UNLOADED	AMW1



SCAN QR FOR PRODUCT PAGE

## FURTHER INFORMATION

- For additional information please contact your sales representative
- To view the product 360 visit the product page (Scan the QR code or visit the link below)
- Downloaded from <https://www.aflhyperscale.com/product/amw1-wall-box-1-lgx-assembly>
- AFL Hyperscale reserves the right to make changes in this datasheet at any time without notice
- Information in this document is correct as of September 16, 2019

## Europe

+44 (0) 1908 441 144  
emeasales@aflhyperscale.com  
© AFL Hyperscale 2019

## Americas

+1 866 814 8615  
usasales@aflhyperscale.com

## Middle East &amp; Africa

+971 4 404 9606  
mesales@aflhyperscale.com

## India

+91 80 46874687  
indiasales@aflhyperscale.com

## Asia Pacific

+86 755 2561 3694  
apacsales@aflhyperscale.com